



St. Joseph's  
Catholic Infant  
& Junior Schools  
Birtley



National Careers Week

# NCW

SUCCESS TARGET  
JOBS INNOVATION DEVELOPMENT PROCESS ADVERTISING BUSINESS STRATEGY  
MANAGEMENT STRATEGY  
DEVELOPMENT DATA  
INNOVATION DATA  
FINANCE INDUSTRY  
CAREERS  
FUTURE  
MOTIVATION  
PLAN INDUSTRY STRATEGY VISION DATA



|                                    |                                                                     |                                                           |                                                           |                                                                                                                              |                                                                                    |                             |                                            |
|------------------------------------|---------------------------------------------------------------------|-----------------------------------------------------------|-----------------------------------------------------------|------------------------------------------------------------------------------------------------------------------------------|------------------------------------------------------------------------------------|-----------------------------|--------------------------------------------|
| Monday 16 <sup>th</sup> January    | Infant Reception                                                    | Infant Year 1                                             | Infant Year 2                                             | Juniors Year 3                                                                                                               | Juniors Year 4                                                                     | Juniors Year 5              | Juniors Year 6                             |
|                                    | Financial Product Manager / Data analyst Reception – 12:45 – 1:30pm | Year 1 – 1:30pm – 2:15pm                                  | Year 2 – 2:15pm – 3:10pm                                  | Based in Year 3 classroom Adult Social Care (Quality Lead) 1:00pm – 1:30pm                                                   | 1:30 – 2:00pm                                                                      | 2:00pm – 2:30pm             | 2:30pm – 3:00pm                            |
|                                    | Drummer Reception – 1:45 – 2:15pm                                   | Drummer Year 1 – 2:30 – 3:10pm                            | Drummer Year 2 – 1:00 – 1:45pm                            | Paramedic Based in Year 4 classroom 2:30 – 3:00pm                                                                            | Paramedic 1:00 – 1:30pm                                                            | Paramedic 1:30pm – 2:00pm   | Paramedic 2:00pm – 2:30pm                  |
| Tuesday 17 <sup>th</sup> January   | Infant Reception                                                    | Infant Year 1                                             | Infant Year 2                                             | Juniors Year 3                                                                                                               | Juniors Year 4                                                                     | Juniors Year 5              | Juniors Year 6                             |
|                                    | Hairdresser Reception – 12:45 – 1:30pm                              | Hairdresser Year 1 – 1:30pm – 2:15pm                      | Hairdresser Year 2 – 2:15pm – 3:00pm                      | Teacher Based in Year 4 Classroom 1:00pm – 1:30pm                                                                            | Swimming                                                                           | 1:30pm – 2:00pm             | 2:00pm – 2:30pm                            |
|                                    | Nurse Reception – 9:00am – 9:30am                                   | Nurse Year 1 – 9:30 – 10:00am                             | Nurse Year 2 – 10:00 – 10:30am                            | Nurse Based in Year 3 Classroom 1:30pm – 2:00pm                                                                              |                                                                                    | 2:00pm – 2:30pm             | 2:30pm – 3:00pm                            |
|                                    |                                                                     |                                                           |                                                           | Deacon Vocations Based in Year 5 Classroom 2:00pm – 2:30pm                                                                   |                                                                                    | 2:30pm – 3:00pm             | 3:00pm – 3:30pm                            |
| Wednesday 18 <sup>th</sup> January | Infant Reception                                                    | Infant Year 1                                             | Infant Year 2                                             | Juniors Year 3                                                                                                               | Juniors Year 4                                                                     | Juniors Year 5              | Juniors Year 6                             |
|                                    | NHS Careers Box Mini-Scrubs AM Session                              |                                                           | NHS Careers Box Mini-Scrubs PM Session                    | Swimming                                                                                                                     | Financial Product Manager / Data analyst Based in Year 5 classroom 2:00pm – 3:00pm | Year 5 1:00pm – 1:30pm      | JBased in Year 5 classroom 1:30pm – 2:00pm |
|                                    | Deacon Peter Lavery Vocations 12:45 – 1:15pm                        | Deacon Peter Lavery Vocations 1:15pm – 1:45pm             | Deacon Peter Lavery Vocations 1:45pm – 2:15pm             |                                                                                                                              | NHS Careers Box Mini-Scrubs                                                        |                             |                                            |
| Thursday                           | Infant Reception                                                    | Infant Year 1                                             | Infant Year 2                                             | Juniors Year 3                                                                                                               | Juniors Year 4                                                                     | Juniors Year 5              | Juniors Year 6                             |
|                                    |                                                                     |                                                           | NHS Careers Box Mini-Scrubs                               |                                                                                                                              |                                                                                    | NHS Careers Box Mini-Scrubs |                                            |
| Friday 20 <sup>th</sup> January    | Infant Reception                                                    | Infant Year 1                                             | Infant Year 2                                             | Juniors Year 3                                                                                                               | Juniors Year 4                                                                     | Juniors Year 5              | Juniors Year 6                             |
|                                    | Adult Social Care (Quality Lead) Reception – 12:45 – 1:30pm         | Adult Social Care (Quality Lead) Year 1 – 1:30pm – 2:15pm | Adult Social Care (Quality Lead) Year 2 – 2:15pm – 3:00pm | Drummer Based in Year 3 Classroom 1:00 – 1:30pm                                                                              | 1:30 – 2:00pm                                                                      | 2:00 – 2:30pm               | 2:30 – 3:00pm                              |
|                                    |                                                                     |                                                           |                                                           | product/brand marketing (food); international development for a charity; business development for a University 2:30 – 3:00pm | 1:00 – 1:30pm                                                                      | 1:30 – 2:00pm               | 2:00 – 2:30pm                              |
|                                    |                                                                     |                                                           |                                                           | Consultation & Engagement Team Leader for Durham County Council 2:00 – 2:30pm                                                | 2:30 – 3:00pm                                                                      | 1:00pm – 1:30pm             | 1:30 – 2:00pm                              |
|                                    |                                                                     |                                                           |                                                           | 1:30pm – 2:00pm                                                                                                              | 2:00pm – 2:30pm                                                                    | 2:30pm – 3:00pm             | 1:00pm – 1:30pm                            |

## Monday's Speakers: Adult Social Care

*What is adult social care?*

---

---

*Which questions would you like to ask the speaker?*

---

---

*What did you learn from the speaker:*

---

---

---

---



## Monday's Speakers: Paramedic

What does the job of a paramedic entail?

---

---

Which questions would you like to ask the speaker?

---

---

---

What did you learn from the speaker:

---

---

---

---



## Tuesday's Speakers: Teacher

What does the job of a teacher entail?

---

---

Which questions would you like to ask the speaker?

---

---

---

How can you become a teacher?:

---

---

---



## Tuesday's Speakers: Nurse

What does the job of a nurse entail?

---

---

Which questions would you like to ask the speaker?

---

---

How can you become a nurse?:

---

---

---



## *Tuesday's Speakers: Ordained Ministry*

*What does the vocation of a Deacon/Priest entail?*

---

---

---

*Which questions would you like to ask the speaker?*

---

---

---

*How can you become an ordained minister?:*

---

---

---



## Wednesday's Speakers: Financial Product Analyst

*What does the financial analyst's job entail?*

---

---

*Which questions would you like to ask the speaker?*

---

---

---

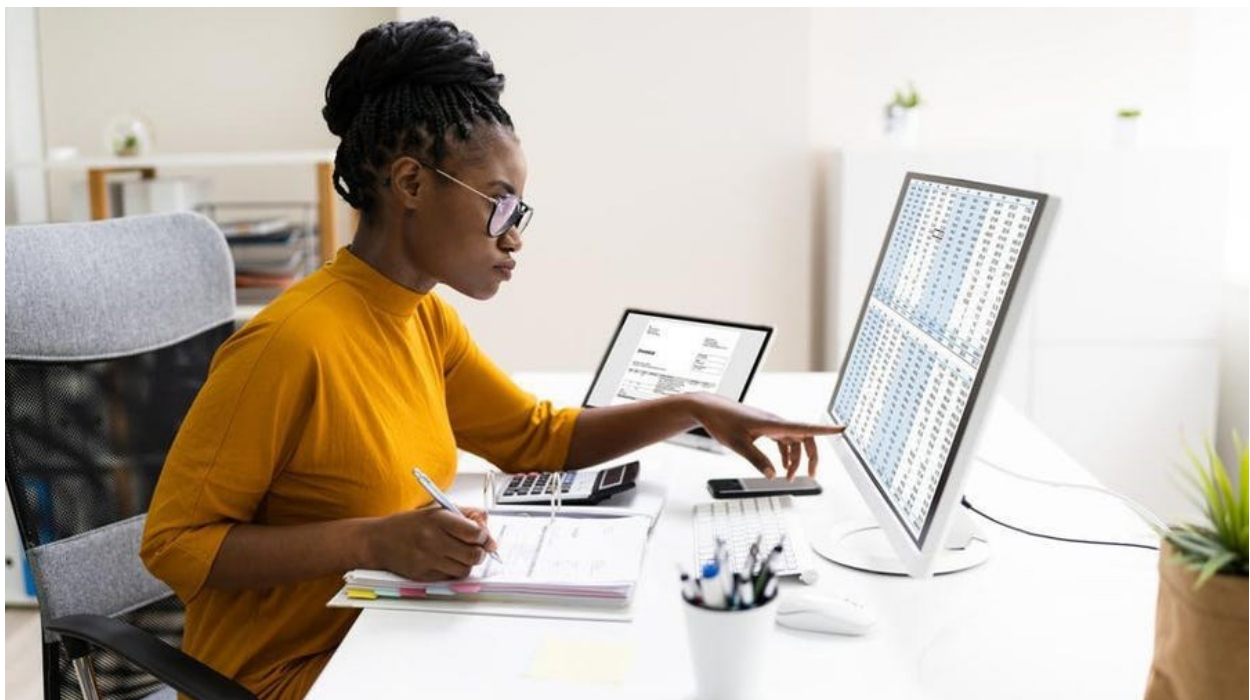
*How can you become a financial analyst?:*

---

---

---

---





## Friday's Speakers: Drummer/Musician

*What does the job of a musician/drummer entail?*

---

---

*Which questions would you like to ask the speaker?*

---

---

---

*How can you become a musician?*

---

---

---



## *Friday's Speakers: Consultation and Engagement Team Leader*

*What does the job of a consultation and engagement leader entail?*

*Which questions would you like to ask the speaker?*

*How can you become a consultation and engagement leader?*



## *Friday's Speakers: Business Development*

*What does business development entail?*

---

---

---

*Which questions would you like to ask the speaker?*

---

---

---

*How can you become a business developer manager?*

---

---

---



## *Friday's Speakers: Music Teacher*

*What does the job of a music teacher entail?*

---

---

*Which questions would you like to ask the speaker?*

---

---

*How can you become a music teacher?*

---

---

---



## NHS Mini-Scrubs



*Would you like to do the role you were chosen to do today, for a living, when you are an adult? Explain your thoughts.*

---



---



---



---



---

*Which career were you asked to represent in the NHS?*

---

*What is the purpose of your job role?*

---



---



---



---



---



---

*How can you become part of the NHS?*

---



---



---



---



---



---



---

## NHS Mini-Scrubs Summary

*Which was my favourite NHS career?*

---

---

---

*Which career would you like to find out more about?*

---

---

---

*Which career surprised you and why?*

---

---

---

---

*What will you do to ensure that you get a good career?*

---

---

---



## Summary

*Which was my favourite career?*

---

---

---

*Which career would you like to find out more about?*

---

---

---

*Which career surprised you and why?*

---

---

---

---

*What will you do to ensure that you get a good career?*

---

---

---







